



*Local and remote
antenna management*



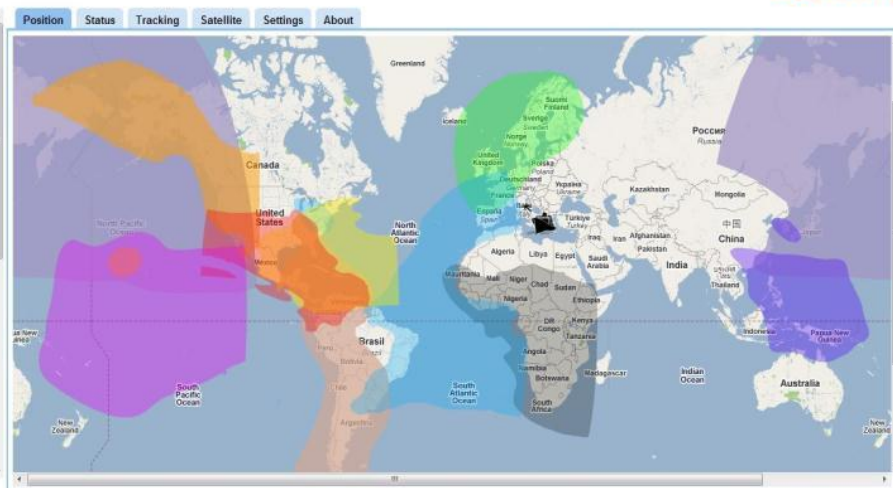
www.skytechltd.co.uk
www.marine-technologies.com



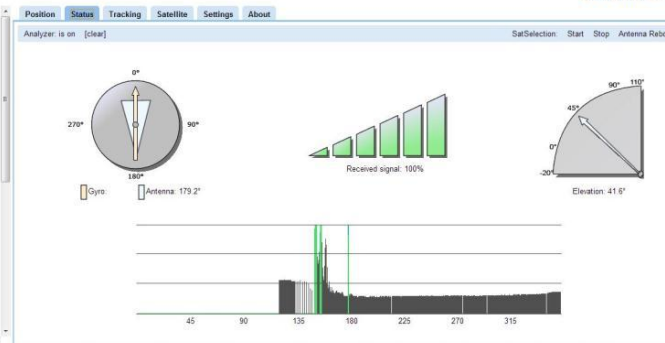
- Antenna monitoring and configuration



- ☐ Status
 - Track Module
 - Antenna
 - Gyro
- ☐ Antenna
 - Status: tracking
 - Lock: lock [a]
 - Signal Strength: 100%
 - AGC: 2200
- ☐ GPS
 - Status: available
 - Latitude: 41.9788°
 - Longitude: 12.4735°
 - Speed: 0.00kn
- ☐ Inertial Platform
 - Status: available
 - Azimuth: 151.4°
 - Elevation: 41.1°
 - Skew: -90.4°
 - Sea Status: harbour
- ☐ Gyro
 - Status: not available
 - Azimuth:
- ☐ Encoder
 - Status: not available



- ☐ Status
 - Track Module
 - Antenna
 - Gyro
- ☐ Antenna
 - Status: tracking
 - Lock: lock [a]
 - Signal Strength: 100%
 - AGC: 2021
- ☐ GPS
 - Status: available
 - Latitude: 41.9788°
 - Longitude: 12.4735°
 - Speed: 0.00kn
- ☐ Inertial Platform
 - Status: available
 - Azimuth: 155.6°
 - Elevation: 41.6°
 - Skew: -90.5°
 - Sea Status: harbour
- ☐ Gyro
 - Status: not available
 - Azimuth:
- ☐ Encoder
 - Status: not available





- Satellite Footprints and preset configurations readily available



Name: Intelsat 21 - KU Mobility
 Longitude: -58°
 Modem technology: iDirect
 LO: 10000
 BUC type: 8W
 RX polarization: Horizontal



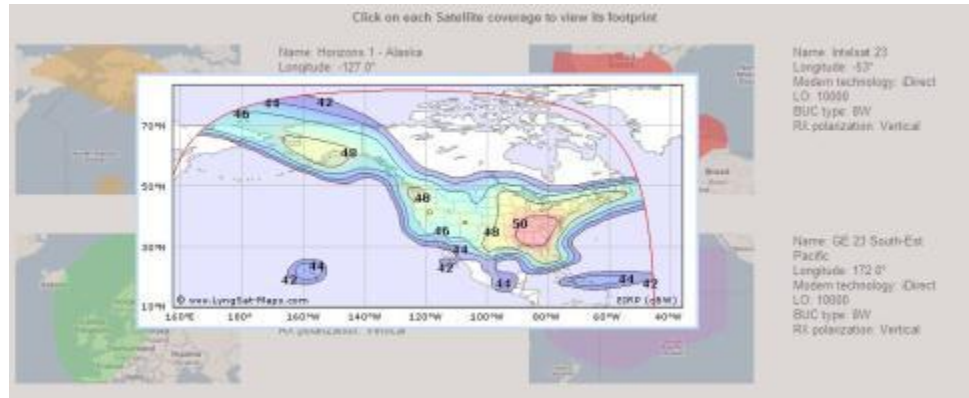
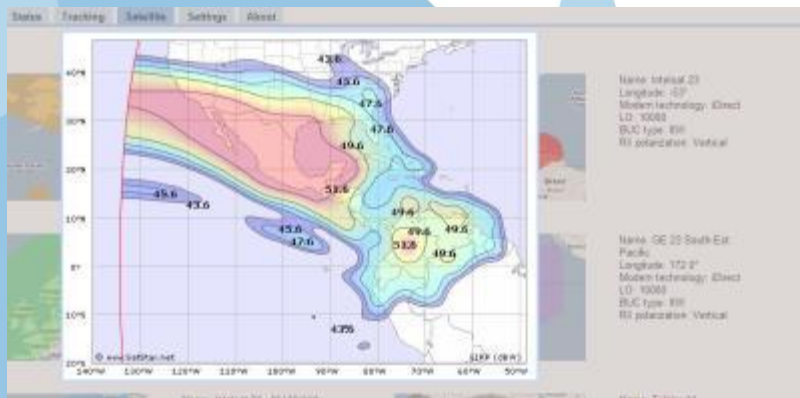
Name: Telstar 11
 Longitude: 37.5°
 Modem technology: iDirect
 LO: 10000
 BUC type: 8W
 RX polarization: Horizontal



Name: Intelsat 14
 Longitude: -45°
 Modem technology: iDirect
 LO: 10750
 BUC type: 8W
 RX polarization: Horizontal

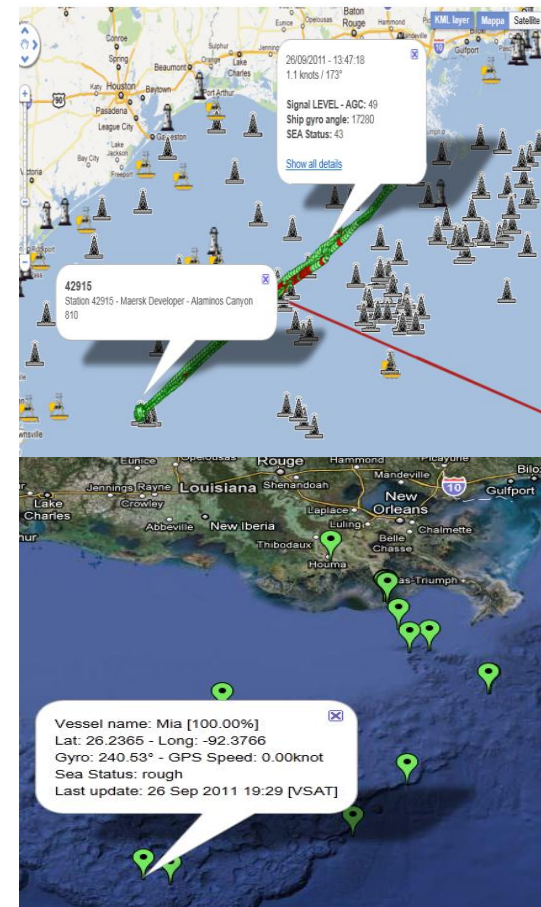


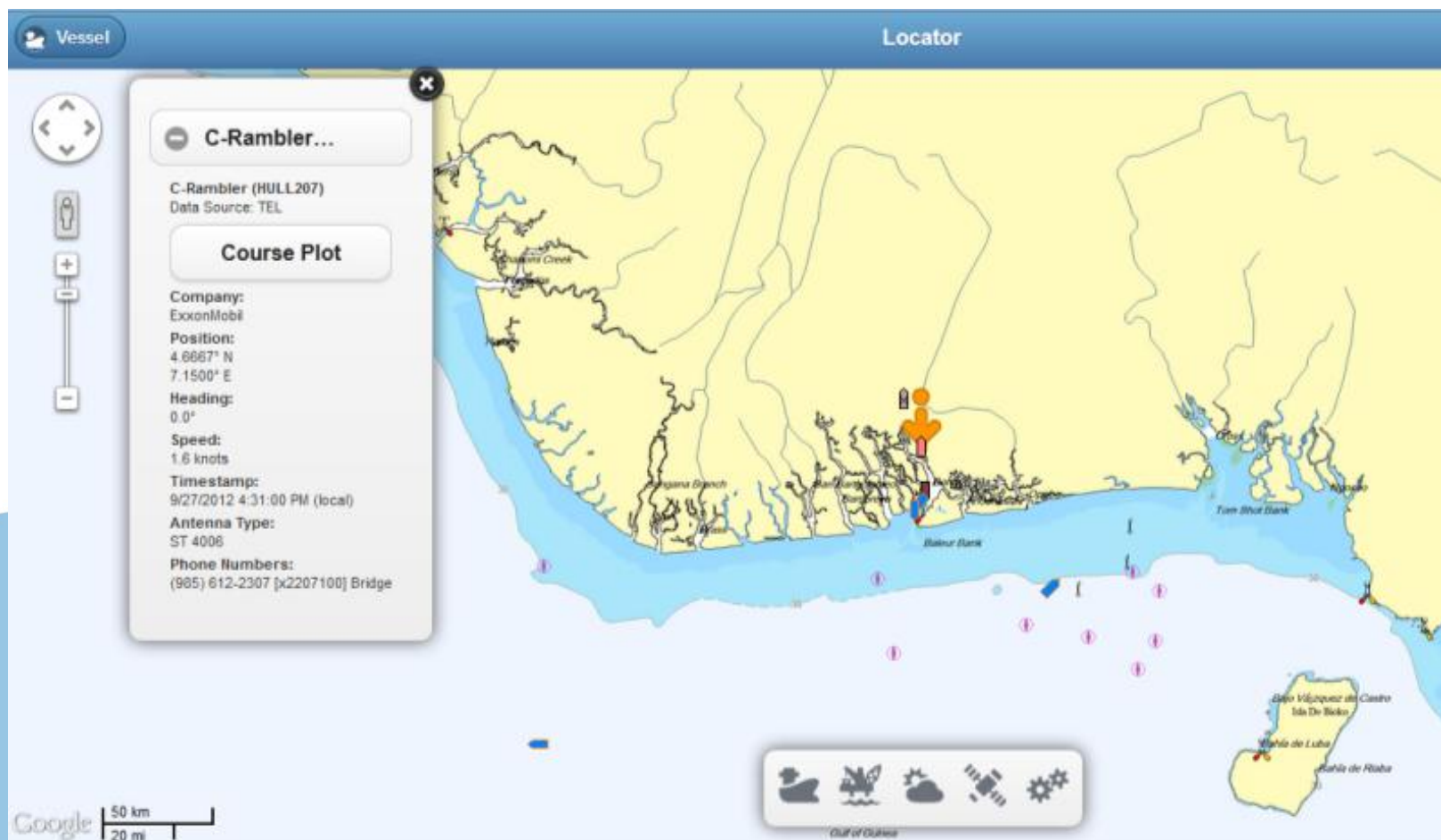
Name: Intelsat 19
 Longitude: 166.0°
 Modem technology: iDirect
 LO: 11300
 BUC type: 8W
 RX polarization: Horizontal





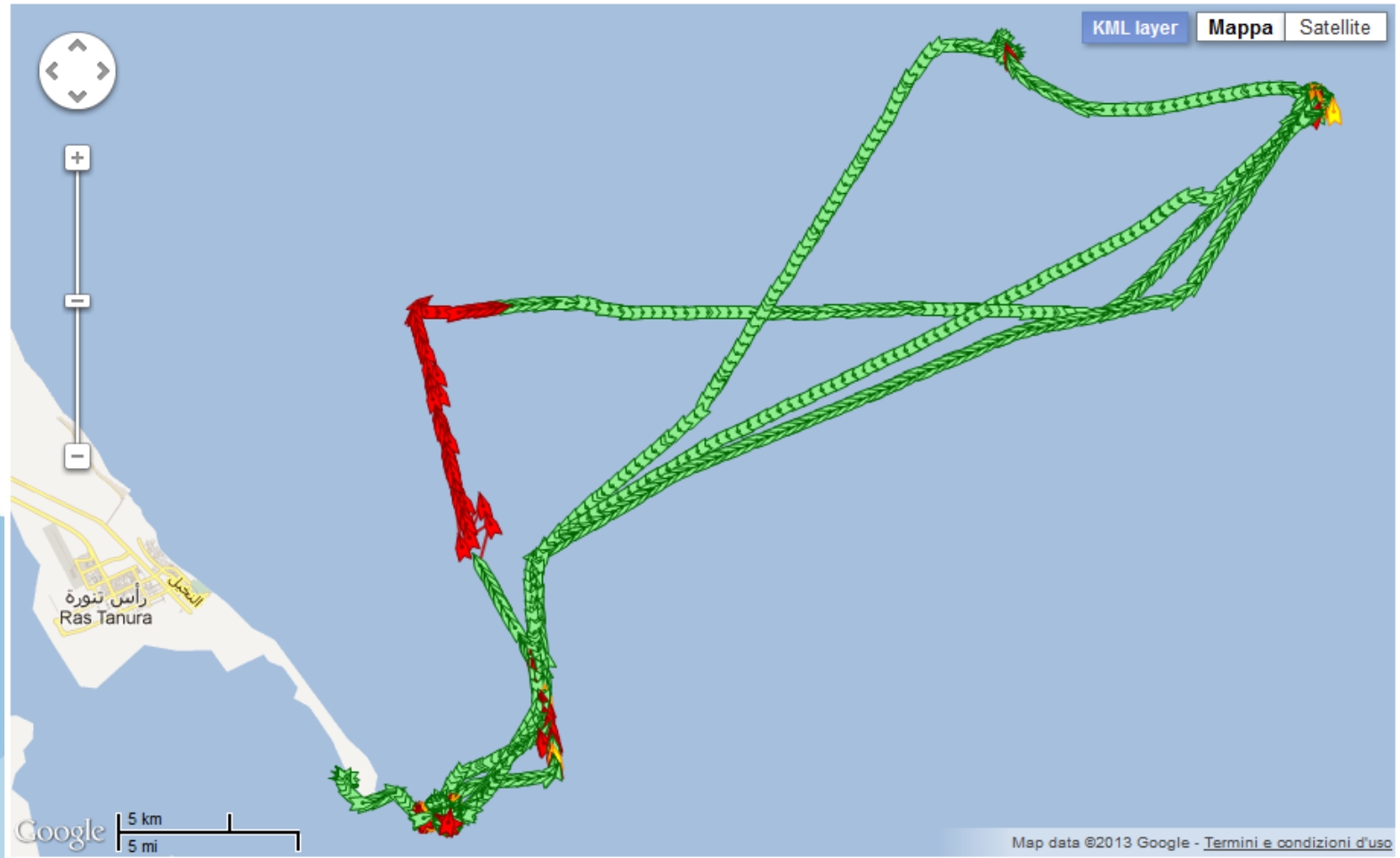
- Remote monitoring of fleet has many benefits:
- Real-time ship position, past and current route
- Real-time local weather and sea state
- Communication system performance index
- Remote troubleshooting and SW upgrades
- Integration of 3rd party subsystems possible





- ECDIS cartography

Database of oil rigs, ship data and contractor

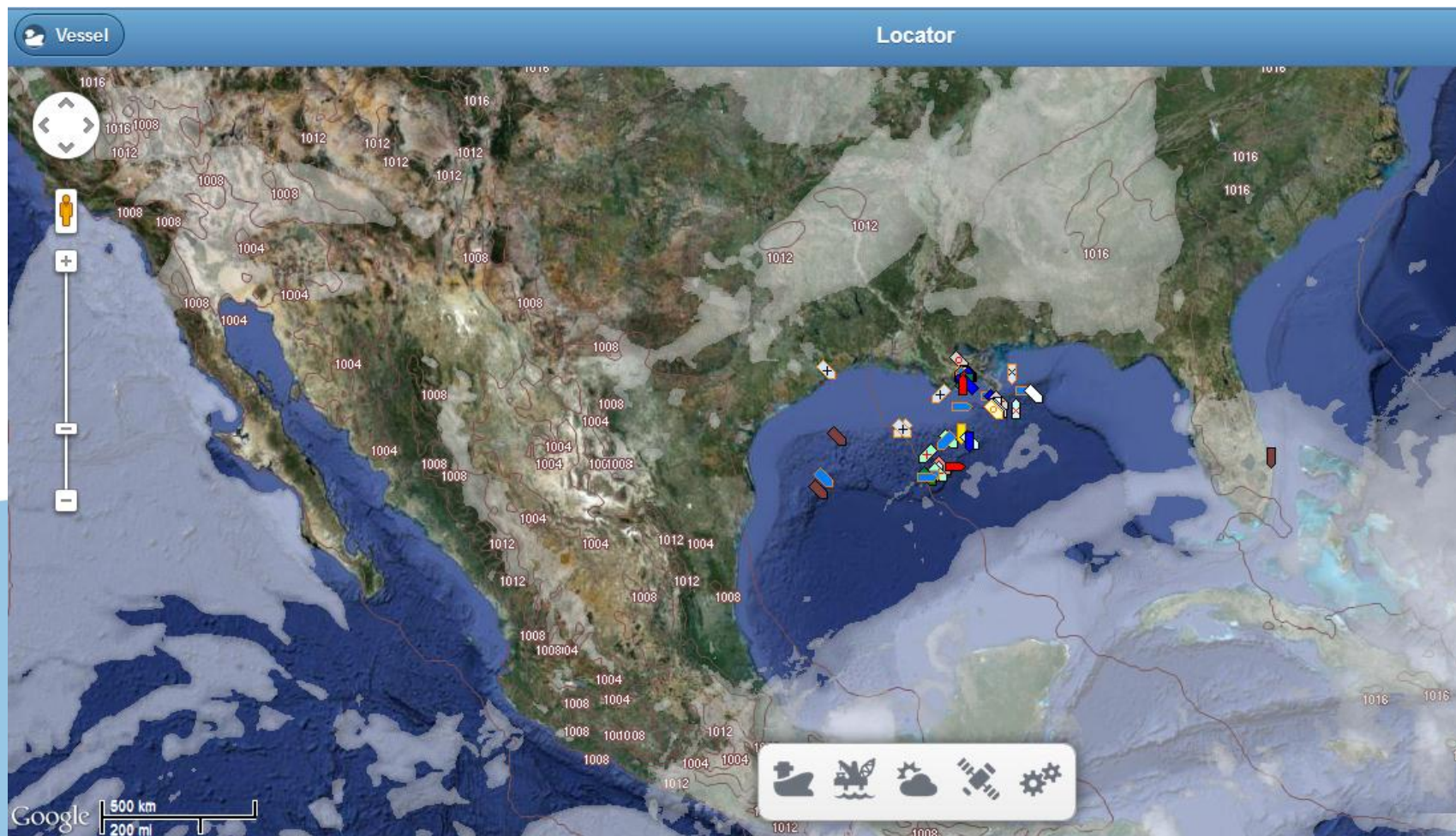


- Real-time ship position, past and current route, showing downtime caused by blockage zones

Date: 08-07-2012 - Location: Christian Chouest



- Performance monitoring even during outage and downtime
- Full telemetry logs downloaded to central server



- Real-time weather forecast, pressure maps, sea status